

Code transmitter 2



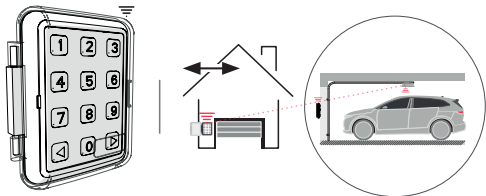
REF. 5329 Code transmitter V1.1 0426

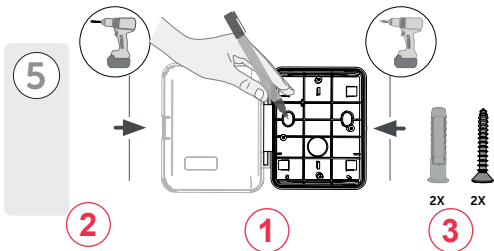
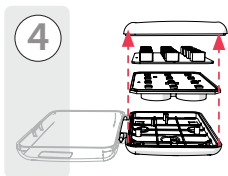
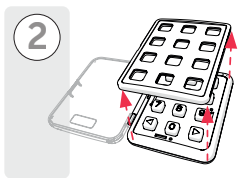
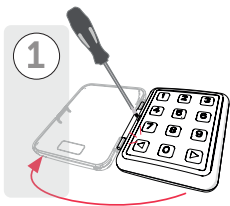
NL: Codeschakelaar 2-kanaals

FR: Emetteur Code 2-canal

ES: Teclado de código de 2 canales

DE: Codesender 2 Kanal





6



* *

password

NL: kanaal 1 standaardwachtwoord: 11

EN: Channel 1 default password: 11

1 FR: Mot de passe par défaut du canal 1: 11

ES: Contraseña predeterminada del canal 1: 11

DE: Standardpasswort für Kanal 1: 11

NL: kanaal 2 standaardwachtwoord: 33

EN: Channel 2 default password: 33

2 FR: Mot de passe par défaut du canal 2: 33

ES: Contraseña predeterminada del canal 2: 33

DE: Standardpasswort für Kanal 2: 33

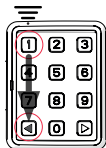
6

A

CHANNEL 1

1

2x

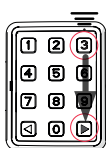


1x

CHANNEL 2

2

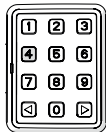
2x



1x

6

B

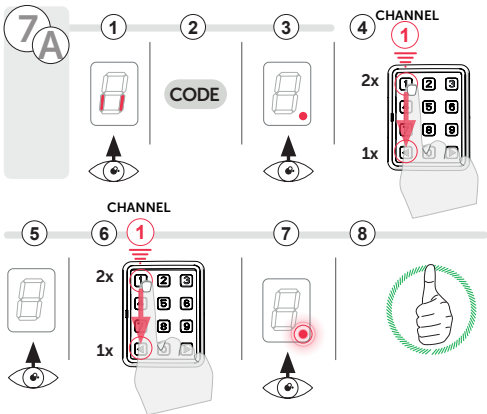
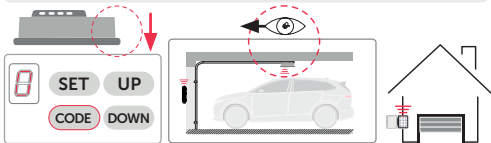


7



CHANNEL 1

NL: Inleren aandrijving
 EN: Programming the operator
 FR: Programmer le moteur
 ES: Programar el motor
 DE: Antrieb anlernen



8

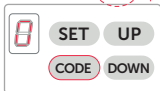


CHANNEL 2

NL: Inleren aandrijving
 EN: Programming the operator
 FR: Programmer le moteur
 ES: Programar el motor
 DE: Antrieb anlernen



OPTION



1



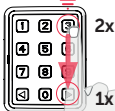
2

CODE

3



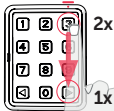
4 CHANNEL 2



5



6



CHANNEL 2

7



8



9



* * * *

NEW

CHANNEL 1

NL: New wachtwoord maximaal 8 cijfers

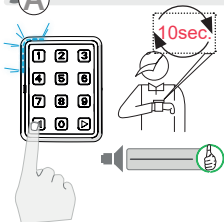
EN: New password: maximum 8 digits

FR: Nouveau mot de passe : maximum 8 chiffres

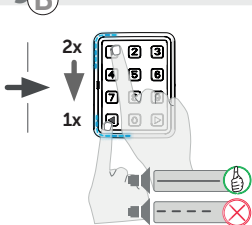
ES: Nueva contraseña: máximo 8 dígitos

DE: Neues Passwort: maximal 8 Ziffern

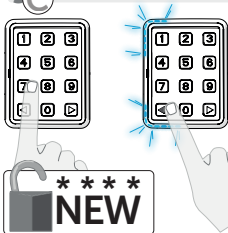
9A



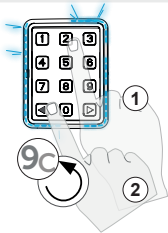
9B



9C



9D





CHANNEL 2

OPTION

NL: New wachtwoord maximaal 8 cijfers

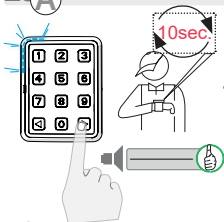
EN: New password: maximum 8 digits

FR: Nouveau mot de passe : maximum 8 chiffres

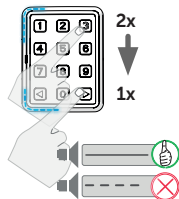
ES: Nueva contraseña: máximo 8 dígitos

DE: Neues Passwort: maximal 8 Ziffern

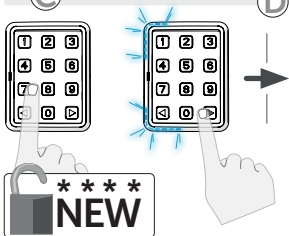
10 **A**



10 **B**



10 **C**



10 **D**

